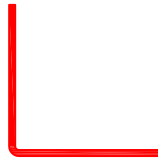
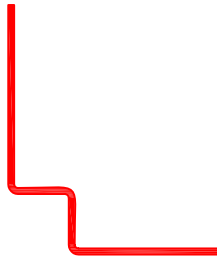


# 1

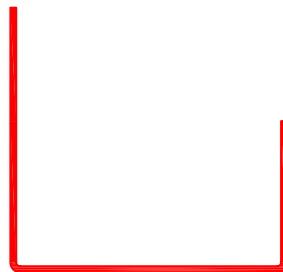
*standard profiles*



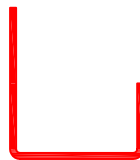
'L-SHAPED' PROFILE



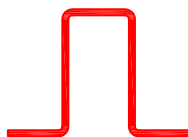
'DOUBLE L-SHAPED' PROFILE



'BIG C-SHAPED' PROFILE

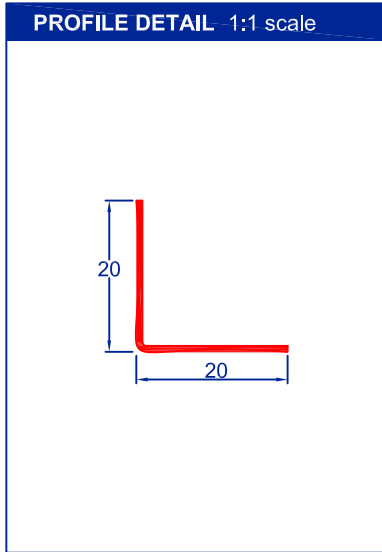


'SMALL C-SHAPED' PROFILE

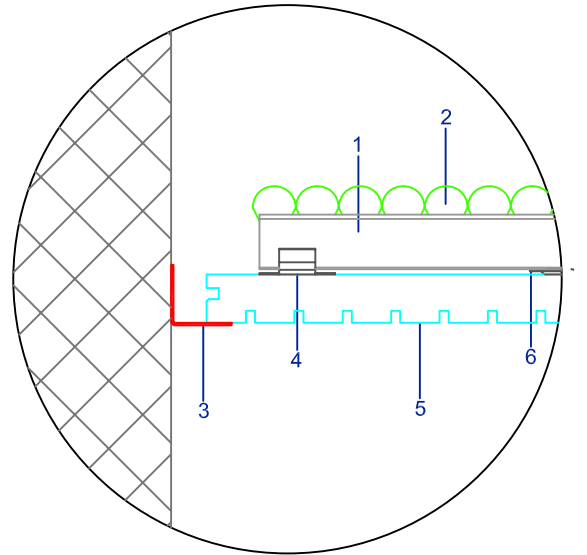


'OMEGA SHAPED' EXPANSION PROFILE

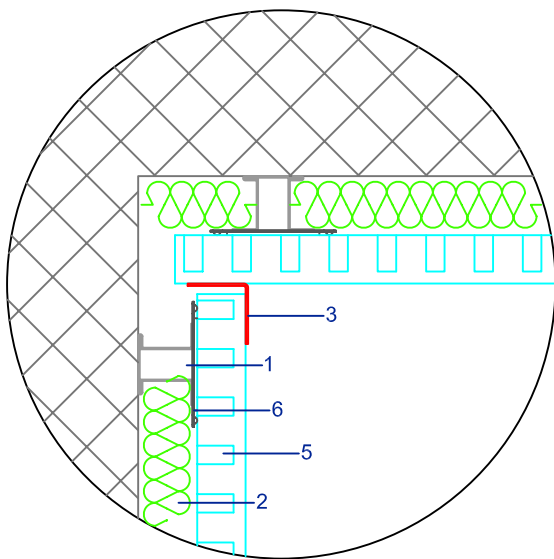
# 'L-SHAPED' PROFILE - ALUMINIUM 8/10



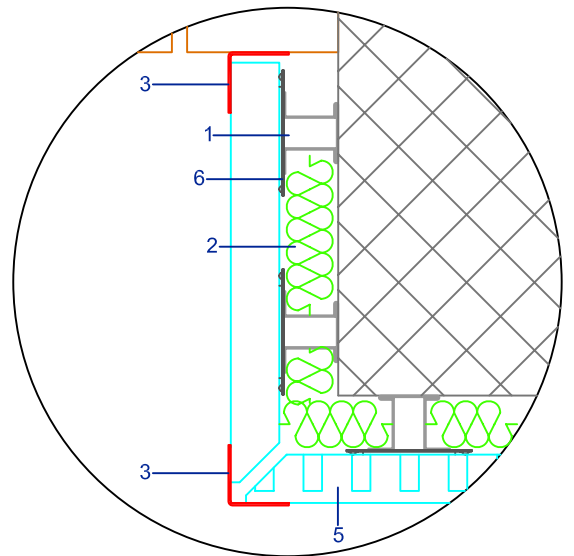
**(FOR) CEILING APPLICATION**



**(FOR) WALL APPLICATION**



**(FOR) WALL APPLICATION**

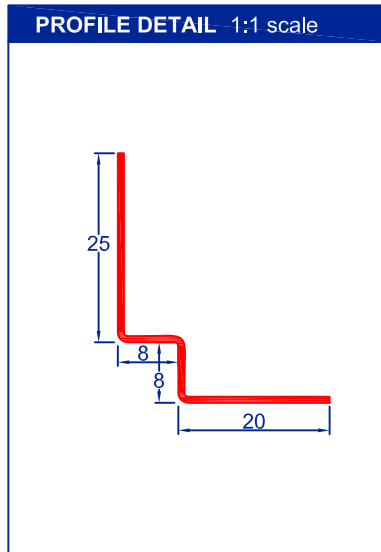


**LEGENDA:**

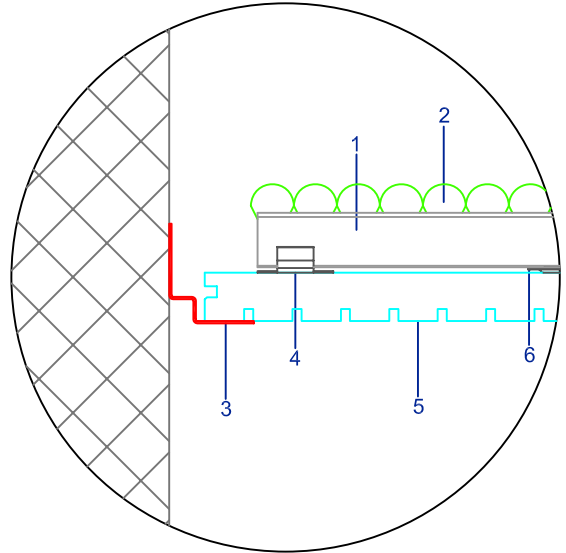
- 1: supporting omega-shaped profile
- 2: thermo-acoustic insulation
- 3: final L-shaped profile
- 4: initial clip
- 5: Topakustik strip
- 6: fastening clip

**Note:** versatile profile, suitable for both ceiling perimetric application and for vertical/horizontal wall application.

# 'DOUBLE L-SHAPED' PROFILE - ALUMINIUM 8/10



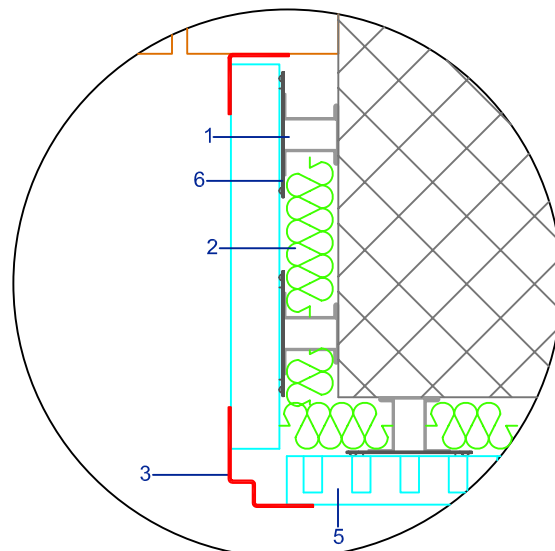
## (FOR) CEILING APPLICATION



### LEGENDA:

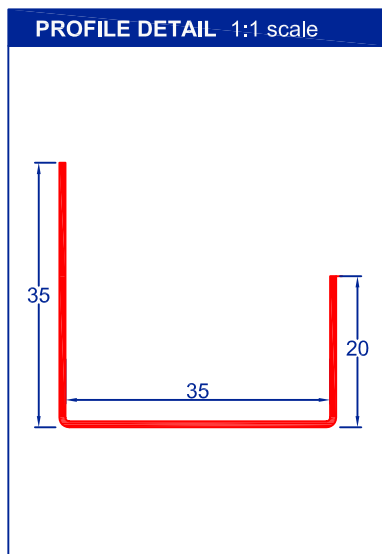
- 1: supporting omega-shaped profile
- 2: thermo-acoustic insulation
- 3: profilo di finitura a doppia L
- 4: initial clip
- 5: Topakustik strip
- 6: fastening clip

## (FOR) WALL APPLICATION

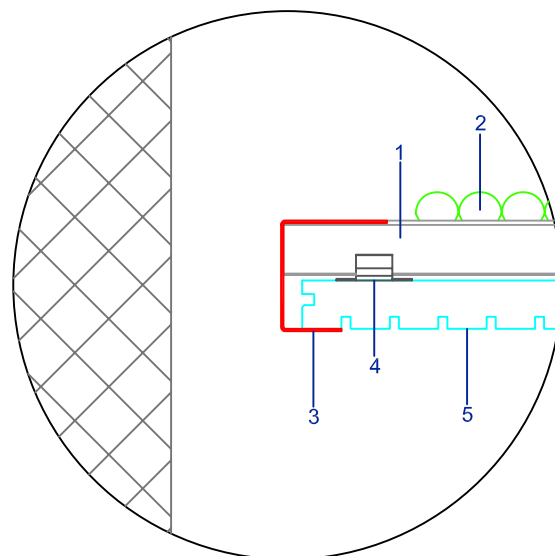


**Note:** profile suitable for ceiling perimetric application as well as for application on vertical elements such as columns, pilasters and window or door intrados.

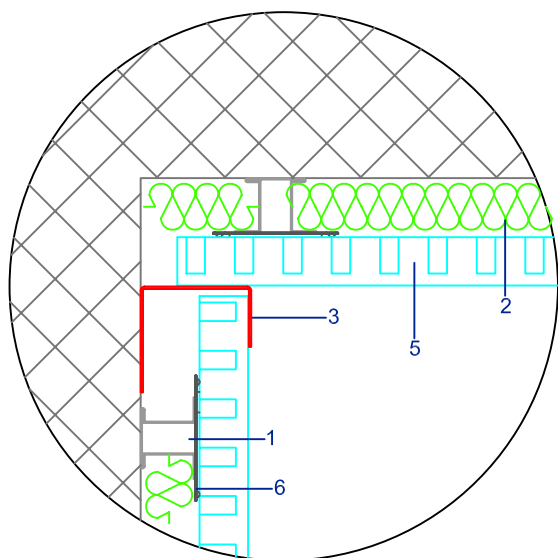
# 'BIG C-SHAPED' PROFILE - ALUMINIUM 8/10



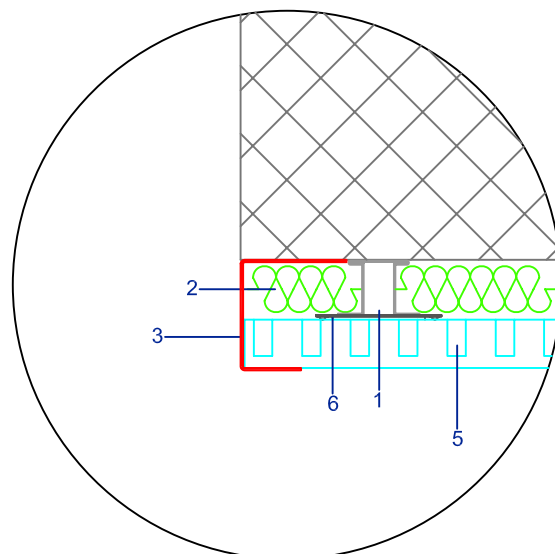
## (FOR) CEILING APPLICATION



## (FOR) WALL APPLICATION



## (FOR) WALL APPLICATION



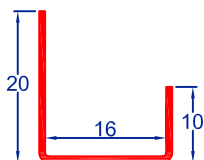
### LEGENDA:

- 1: supporting omega-shaped profile  
 2: thermo-acoustic insulation  
 3: 'big C-shaped' profile  
 4: initial clip  
 5: Topakustik strip  
 6: fastening clip

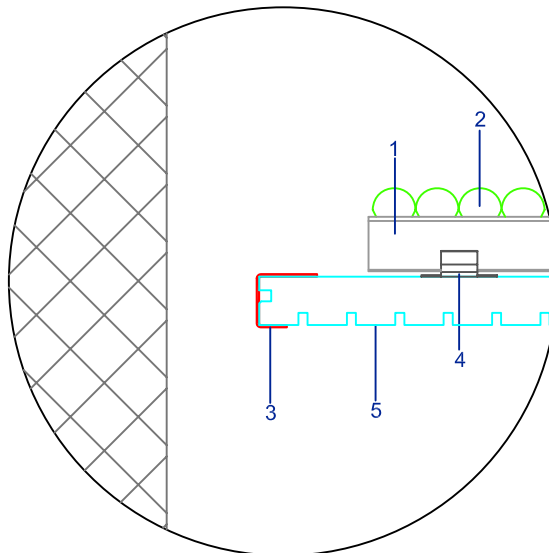
Note: profile especially suitable for vertical wall application, as well as for perimetric application on suspended elements.

# 'SMALL C-SHAPED' PROFILE - ALUMINIUM 8/10

PROFILE DETAIL 1:1 scale



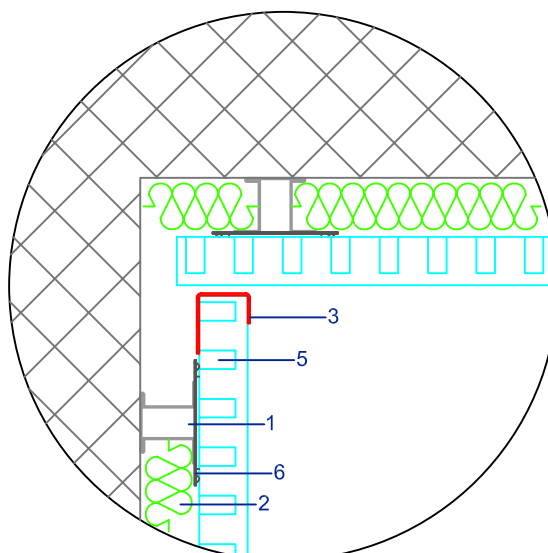
## (FOR) CEILING APPLICATION



## LEGENDA:

- 1: supporting omega-shaped profile
- 2: thermo-acoustic insulation
- 3: 'small C-shaped' profile
- 4: initial clip
- 5: Topakustik strip
- 6: fastening clip

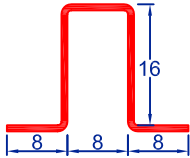
## (FOR) WALL APPLICATION



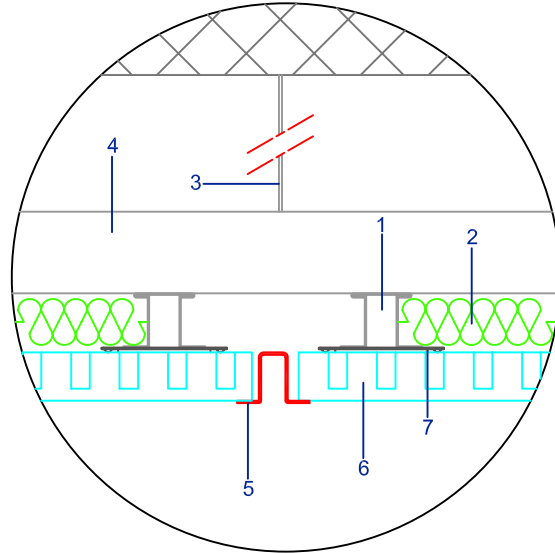
Note: profile especially suitable for vertical wall application, as well as for perimetric application on suspended elements.

# 'OMEGA-SHAPED' EXPANSION PROFILE - ALUMINIUM 8/10

PROFILE DETAIL 1:1 scale



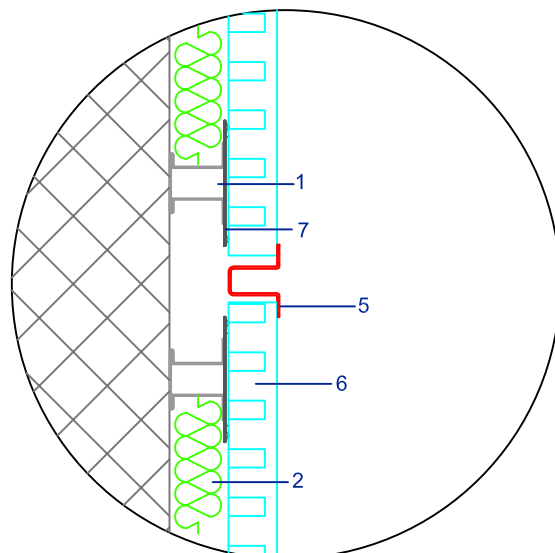
## (FOR) CEILING APPLICATION



### LEGENDA:

- 1: supporting omega-shaped profile
- 2: thermo-acoustic insulation
- 3: hanger
- 4: supporting 'C-shaped' profile
- 5: 'omega-shaped' expansion profile
- 6: Topakustik strip
- 7: fastening clip

## (FOR) WALL APPLICATION



Note: profile acting as expansion joint for walls/false ceilings with significant linear size.